

ESTILL COUNTY FAIR OPEN/YOUTH BEEF CATTLE SHOW

6:30 P.M.
Beef Cattle Show Starts



5:00-6:30 P.M.
Enter Beef Cattle

Admission:
\$10 for ages 3 and up
*Fair admission fee is the only fee for all
beef show participants*

Estill County Fairgrounds
Wednesday, July 5, 2017

PLACE
POSTAGE
HERE

Estill County Agricultural Fair Association, Inc.
"For A Better Estill County"
P. O. Box 361
Irvine, Kentucky 40336

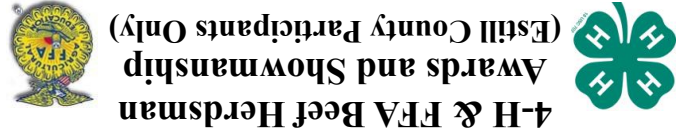
For More Information, contact:
 Fred Brown II, Beef Show Chair (606) 643-5107
 Jason Crowe (606) 723-6062 or the

- The committee may combine classes if there are less than 2 exhibitors exhibiting less than 3 animals.
- Any breed with 10 or more head will be given their own breed class.
- In order for cattle to enter a breed class, animals must have registration papers; otherwise, they will be considered commercial.
- Any exhibitor wishing to change classes after registration must show registration.
- Farm animals—not responsible for accidents. Fair Board will not be responsible for accidents as per KRS 247-401—KRS 247-4029
- NO generators in pavilion area.

MARKET SHOW
 Market animals will be divided to not more than 10 per class
No entry fee for out of county animals

Rules:

(Open Showmanship Classes for everyone else)
 All 4-H exhibitors must have completed the 6 hours of livestock education and show proof.



Classes will be rotated by ages and breeds:
 Heifer Classes, Then Bull Classes

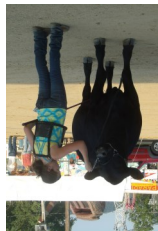
BREEDS:
 Angus, AOB, Charolais, Commercial
 (Cross Breed), Polled Hereford, Salers
 and Simmental

OPEN CLASS PRIZE MONEY
 1st Place—\$25; 2nd Place—\$15; 3rd Place—\$10
YOUTH CLASS PRIZE MONEY
 (Open to out-of-county youth)
 1st Place—\$12; 2nd Place—\$7; 3rd Place—\$5

HEIFER & BULL CLASSES
 All animals must be halter broken & under control of exhibitor
Cow & Calf Class
 Junior Calf—calved Jan. 1, 2017
 Senior Calf—calved Sept. 1, 2016-Dec. 31, 2016
 Summer Yearling—calved May 1, 2016—Aug. 31, 2016
 Junior Yearling—calved Jan. 1, 2016-Apr. 30, 2016
 Senior Yearling—calved Sept. 1, 2015-Dec. 31, 2015
2 Yr Old Bull—calved Sept. 1, 2013—Aug. 31, 2015
 Any bull over 1 year old must have nose ring.
 Champion—All 1st Place winners will participate

**Open
 Beef Judging &**

**2017 Agriculture
 Hall of Fame Inductees
 Announced**



**\$25 to each Breed Champion
 (bulls & heifers)**

**\$250 to each Supreme Grand Champion
 \$100 to each Reserve Supreme Grand Champion
 (bull, heifer & steer)**

**We have a wash rack
 facility and a covered
 show ring.**

NEW FOR 2017
 Un-halterd Cattle Show
 Female—2 Years Old & Under
 Female—Over 2 Years Old
 Bull—Any Age
 Judging at 4:00 P.M.
 \$50 gift card awarded in each class
 Open only to Estill County Residents
 For animals not shown in haltered classes